

# EMERGENCY EVACUATION PLAN

June 2020



## Prepared for:

City of Langford  
2625 Peatt Road  
Langford BC V9B 3T9

## Prepared by:

Behr Integrated Solutions Inc.  
750, 600 – 6 Avenue SW  
Calgary AB T2P 0S5  
403-444-6940

[www.behrintegrated.com](http://www.behrintegrated.com)







## **ACRONYMS**

BC	British Columbia	EOC	Emergency Operations Center
CRD	Capital Regional District	ERP	Emergency Response Plan
EMBC	Emergency Management BC	SOLE	State of Local Emergency
ESS	Emergency Support Services		



## PLAN DISTRIBUTION AND MAINTENANCE

### Record of Revisions

Date	Annual Update (Y/N)	Details

### Distribution List

Recipient		Location	Copies			Manual No.
			C*	N/C*	E*	
Internal Recipients						
Total Copies						
External Recipients						
Agency	Recipient	Location	C*	N/C*	E*	Manual No.
Total Copies						
TOTAL COPIES DISTRIBUTED						

\*C denotes Confidential Information within the Plan

\*E denotes Electronic Copy

\*N/C denotes Confidential Information has been removed from the Plan



## **AMENDMENT PROTOCOL**

This Emergency Evacuation Plan (plan) will be reviewed, validated and updated annually, or as required, by the Emergency Program Coordinator.

All amendments will be distributed to each individual plan holder who will be responsible for incorporating them as they are received. A record of all amendments will be maintained using the Record of Revision at the front of this plan.

As a registered holder of this plan, you have an obligation to assist in the maintenance of accurate up to date information. If you detect an error in the plan, or subsequent to its revision publication date, become aware of any changes to any information contained herein, please forward such information as soon as possible to:

<b>Attn:</b>	Chris Aubrey City of Langford, Fire Chief
<b>Phone:</b>	250-391-3426
<b>Email:</b>	caubrey@langford.ca



*This page has been left blank intentionally.*



## TABLE OF CONTENTS

<b>SECTION 1 INTRODUCTION .....</b>	<b>5</b>
1.1 Purpose .....	5
1.2 Scope.....	5
1.3 Background .....	6
<b>SECTION 2 OPERATIONAL EVACUATION PLAN .....</b>	<b>10</b>
2.1 Overview .....	10
2.2 Evacuation Response Actions .....	11
2.2.1 Evacuation Response Flow Chart.....	11
2.3 Evacuation Response .....	12
2.3.1 Threat Level Monitoring.....	12
2.3.2 Evacuation Trigger Points .....	13
2.3.3 Vulnerable Population .....	15
2.3.3.1 Special Facilities .....	15
2.3.3.2 Special Needs Population.....	15
2.3.3.3 Schools and Childcare .....	16
2.3.3.4 Non-residents and Seasonal Visitors .....	16
2.3.4 Levels of Evacuation.....	16
2.3.4.1 Alert.....	16
2.3.4.2 Level One .....	16
2.3.4.3 Level Two.....	16
2.3.4.4 Level Three .....	17
2.3.5 Evacuation Stages .....	17
2.3.5.1 Tactical Evacuation .....	17
2.3.5.2 Stage 1 - Evacuation ALERT .....	17
2.3.5.3 Stage 2 - Evacuation ORDER .....	17
2.3.5.4 Stage 3 - Evacuation RESCIND .....	17
2.3.6 Evacuation Zones .....	18
2.3.7 Reception Centres.....	19
2.3.8 Transportation Logistics .....	19
2.3.9 Emergency Transportation Planning.....	19
2.3.10 Evacuation Routes.....	20
2.3.10.1 Zone 1.....	20
2.3.10.2 Zone 2.....	20
2.3.10.3 Zone 3.....	20
2.3.10.4 Zone 4.....	21



---

2.3.10.5 Zone 5 .....	21
2.3.10.6 Zone 6 .....	21
2.6 Emergency Alerting Systems.....	21
2.6.1 West Shore Alert.....	21
2.6.2 Alert Ready .....	22
2.6.3 Public Evacuation Scripts.....	22
2.6.4 Access Control and Security .....	22
2.6.5 Recall of Evacuees.....	22
2.6.6 Re-entry Protocol .....	23
<b>APPENDIX A - VULNERABLE POPULATIONS AND CRITICAL INFRASTRUCTURE .....</b>	<b>24</b>
<b>APPENDIX B – SUPPORT SERVICES.....</b>	<b>28</b>
<b>APPENDIX C – EMERGENCY OPERATIONS AND RECEPTION CENTRES .....</b>	<b>30</b>
<b>APPENDIX D – SCRIPTS .....</b>	<b>32</b>
<b>APPENDIX E - MAPS.....</b>	<b>36</b>





## **SECTION 1 INTRODUCTION**

### **1.1 Purpose**

The purpose of this Emergency Evacuation Plan is to clearly align response objectives with operational procedures used by the Local Authority to facilitate a timely and effective response to an emergency situation requiring the full or partial evacuation of the City of Langford (Langford).

The Plan includes:

- Criteria for assessing emergency situations
- Procedures for issuing emergency evacuation Alerts and Orders
- Evacuation considerations
- Geographical maps of evacuation zones and important features including vulnerable populations, critical infrastructure, reception centres and primary evacuation routes

This Plan is to be used in conjunction with the City of Langford Emergency Management and Recovery Plan, which provides additional overarching procedures to be used in any emergency, such as:

- BC Emergency Management System (BCEMS) overview
- Roles and responsibilities
- EOC activation and management
- Guidelines for declaring a State of Local Emergency (SOLE)

### **1.2 Scope**

This plan applies to any actual or anticipated emergency or disaster that could prompt the full or partial evacuation of the City of Langford, whether the emergency is within or outside of the city boundaries. Evacuation specific response procedures are included within the plan for scenarios which are most likely to occur and / or will have the greatest impact on life, safety, the environment and infrastructure in the area.

This plan does not address emergencies that are handled under normal circumstances by on-scene first responding agencies.



### **1.3 Background**

The City of Langford (Langford) is located on southern Vancouver Island. This municipality is one of 13 others that are a part of the Capital Regional District. Its immediate neighboring communities include Colwood (SE), Highlands (N), Metchosin (SE) and View Royal (NE).

The city is situated on low land (76m elevation) in the foothills of Mount Finlayson, with various peaks of basalt bedrock. The city has three small lakes and is crossed by the Goldstream River. It is bordered by Goldstream Provincial Park and Thetis Regional Park to the north, as well as Mount Wells Regional Park to the west. The area is prone to frequent seismic activity, however large scale earthquakes (6.0 - 7.0) are possible, and have occurred.

The city generally has a warm and temperate climate, however experiences frequent and potentially severe rain in the winter months. Atmospheric river events are common and can bring over 100mm of rain to the area in less than 24 hours.

This combination of environmental and geographical factors pose a varying degree risk from flooding, wildfires and earthquakes that could prompt either a partial or full evacuation of the city.

In addition to natural risks, the city, like other cities of similar size and population, also has several major arteries crossing the city, as well as industrial sites that could pose a hazmat risk to surrounding sites. Of particular concern, is the water treatment facility located in the western portion of the city in close proximity to a residential area.

#### **Flood Risk**

Atmospheric river events pose the greatest flood risk to the city, and are attributed to rapid onset flooding prompting localized and potential wide scale evacuation. Flooding events can occur throughout the city due to the inability of drainage systems to keep up with heavy rainfall. Overland flooding does occur around rivers and lakes, however this is not a predictor of evacuation patterns. See Appendix E for 200-year Floodplain Map

#### **Earthquake Risk**

A major earthquake in the region could prompt an evacuation response due to:

Tsunami warning

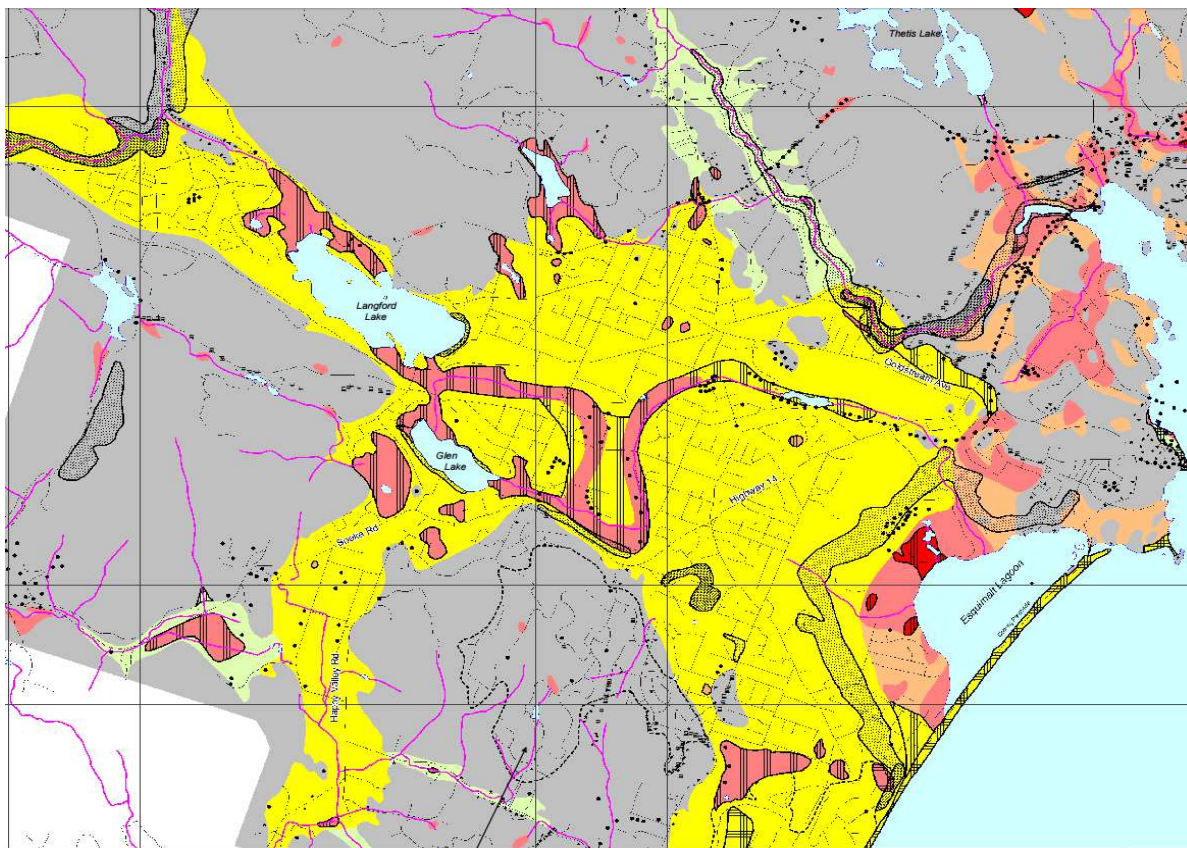
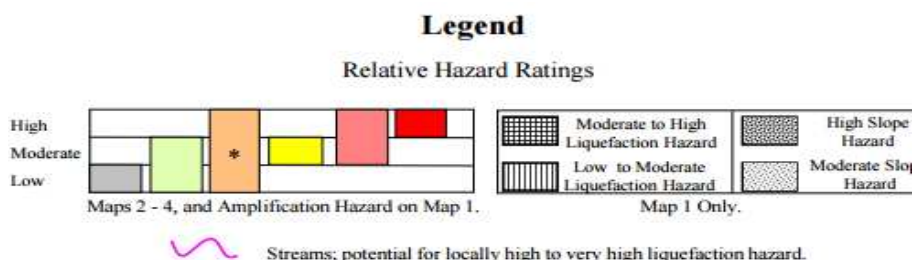
A regional tsunami warning may be generated following a strong off shore earthquake. Inundation zones within Langford are minimal due to elevation and distance from the coast, and evacuations are not expected to be widespread within the area, however the City may receive evacuees from surrounding communities.



### Structural collapse, ground instability and liquefaction

Studies indicate that many parts within and around the City have a moderate to high risk of ground motion and liquefaction. Structural collapses following a major earthquake are expected, and could prompt localized evacuations. High-rise buildings are particularly vulnerable and the City should prioritize evacuations based on structural engineering reports areas of greatest instability (time permitting).

### Relative Earthquake Hazard Map of Greater Victoria<sup>1</sup>



<sup>1</sup> [http://cmscontent.nrs.gov.bc.ca/geoscience/PublicationCatalogue/GeoscienceMap/BCGS\\_GM2000-01.pdf](http://cmscontent.nrs.gov.bc.ca/geoscience/PublicationCatalogue/GeoscienceMap/BCGS_GM2000-01.pdf)

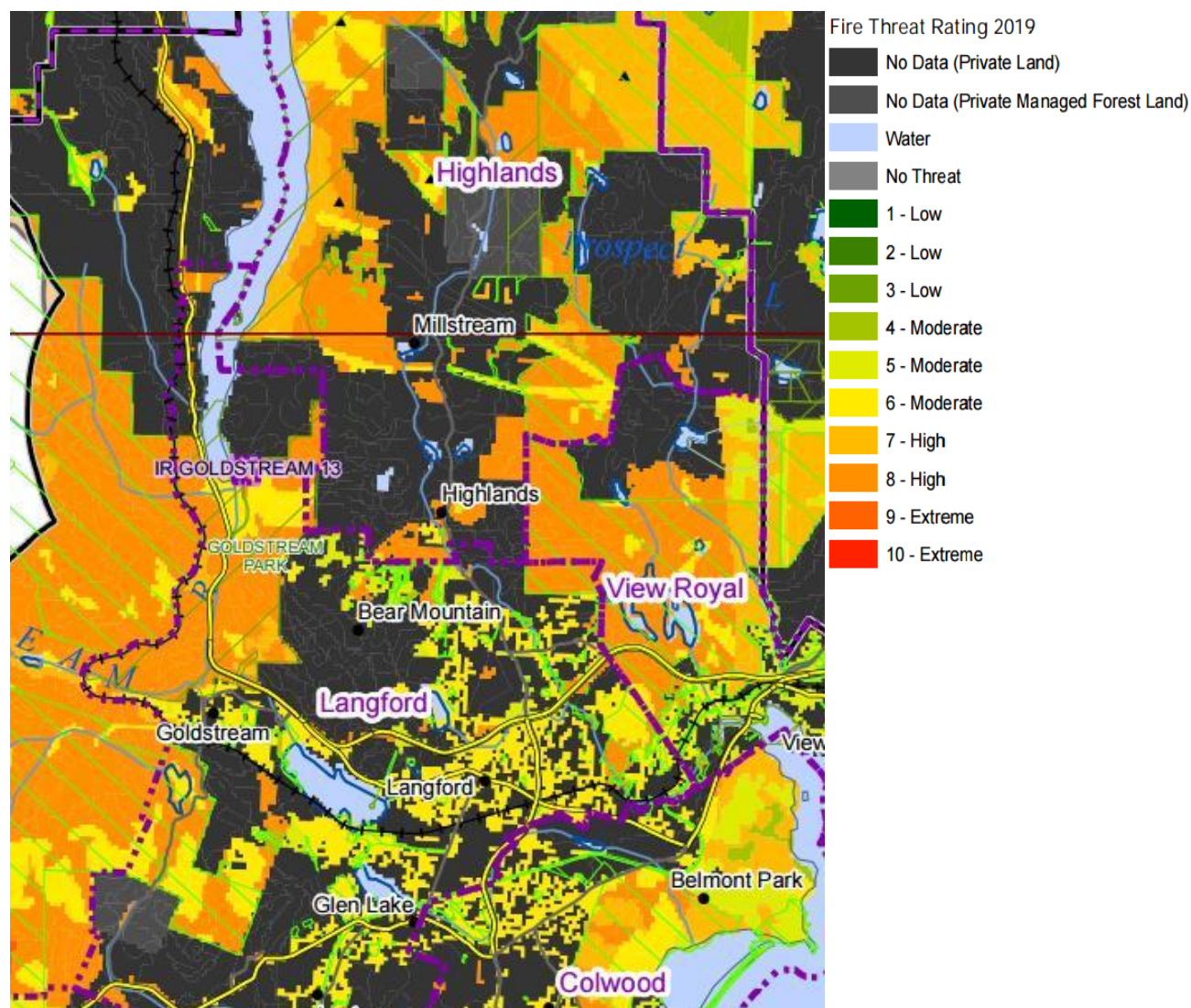




## Wildfire Risk

A Community Wildfire Protection Plan (CWPP) was developed for the City and surrounding area (2020) which concludes that the risk of a wildfire in the region is high, particularly in the summer months of July to August. Elevated temperatures and a history of drought in the region are conducive to wildfire ignition to the north and west of the City. Communities bordering these areas are particularly vulnerable to the threat of an evacuation during a major wildfire event. Refer to CWPP for further hazard analysis.

### WUI Risk Class Map<sup>2</sup>



<sup>2</sup> Government of BC WUI Risk Class Map <https://www2.gov.bc.ca/gov/content/safety/wildfire-status/prevention/vegetation-and-fuel-management/fire-fuel-management/wui-risk-class-maps/wui-downloads>



With the inherent risk to the community illustrated above, it is imperative that the Local Authorities have a pre-determined plan which facilitates:

- Effective communication between the Local Authority, Provincial Agencies, River Forecast Centre and BC Emergency Management
- Accurate evaluation of risk
- Rapid public notifications
- Coordination between government agencies
- Appropriate determination of evacuation routes
- Identification of reception areas

Section 2 of this Plan outlines the framework to achieve the above response goals. It is expected that the Local Authority will continually assess the risk and potential impact of an emergency situation and adjust accordingly.



## SECTION 2

# OPERATIONAL EVACUATION PLAN

### 2.1 Overview

The primary objective of an evacuation response is to protect the public from the adverse effects, or potential adverse effects of an emergency. The decision to evacuate will be made by the Incident Commander in conjunction with the EOC Director based on a current and projected threat assessment.

An important planning consideration when determining if an evacuation is required and to what extent it is required is the early identification of indicators and triggers.

Indicators are information-based forecasts and predictions such as: rainfall, wind speed and direction, temperature, humidity etc. (See Section 2.3.1. Threat Level Monitoring).

Triggers are pre-determined decision points that may be related to the hazard affecting a particular geographical point such as: distance of the hazard to the public and / or important infrastructure, the nature of the hazard (toxic fumes, set back distances etc.), and historical events of comparison. (See Section 2.3.2. Evacuation Trigger Points).

The notice to evacuate may require rapid implementation without the ability / time to declare a State of Local Emergency (SOLE). The Incident Commander or EOC Director may activate a tactical evacuation response based on the evaluation of the risk whenever deemed necessary for the protection of life, health and safety of the public.

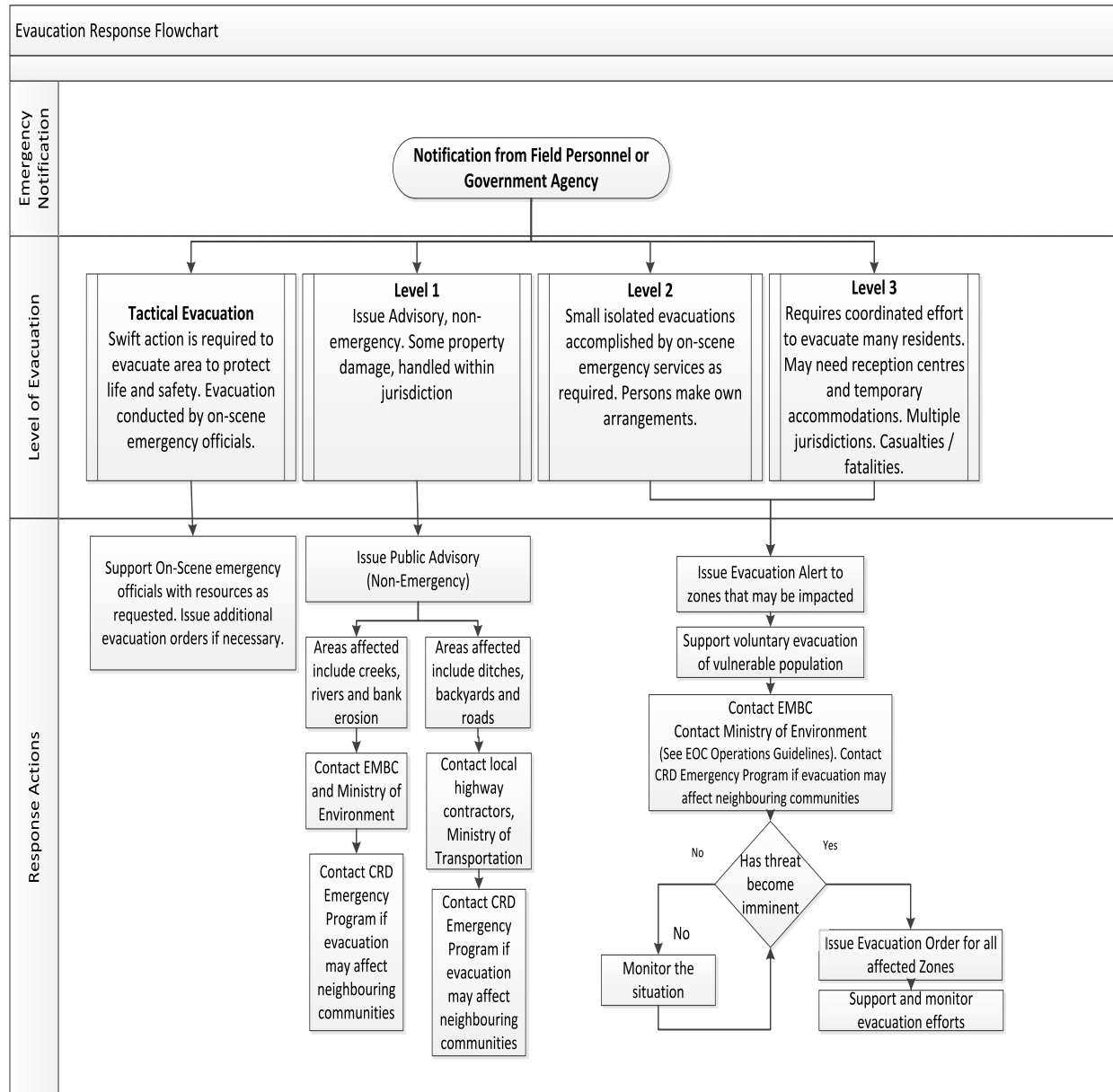


## 2.2 Evacuation Response Actions

### 2.2.1 Evacuation Response Flow Chart

Upon receipt of any incident notification that may require an evacuation response, the following actions will be considered.

Figure 1: Evacuation Response Flowchart





## 2.3 Evacuation Response

### 2.3.1 Threat Level Monitoring

The table below represents various factors to be monitored when considering an evacuation or the potential for an evacuation in the near term. A full evaluation of each item in context of the situation must be taken into consideration. Note, this list is not exhaustive of all potential aggravating and mitigating factors to consider.

Primary factors to consider  
Secondary factors to consider

	Wildfire	Industrial Fire / Explosion	Hazmat Release	Flooding	Earthquake
Meteorological	Are winds prevailing towards the community				
	Are winds expected to increase in near term				
	Is humidity lower than temperature				
	Are temperatures expected to rise				
	Are temperatures expected to fall				
Environmental	Is rain / snow expected in the forecast				
	Is there a threat of contamination from the environment				
	Is there a need to isolate the area to protect vegetation or animal habitat				
	Is there a toxic element in the environment i.e. invasive species, algae, leaching material, runoff				
Human Health	Has air quality reached unsafe levels				
	Is air quality expected to worsen or improve				
	Is there or will there be a prolonged issue with sanitation				
	Is there or will there be a prolonged issue with lack of heat / cooling of residential units				
	Is evacuation / isolation necessary to prevent spread of disease				
Life Safety	Is there or will there be a prolonged issue with radiation				
	Is there or will there be a prolonged issue with exposure to toxic emissions				
	Is there a threat of violence to community members				
	Has local infrastructure become unstable / inaccessible posing a threat of injury				
	Has the carrying capacity of the community been dangerously exceeded				
Expert Opinion	Is there a lack of emergency services (police, fire, ambulance)				
	Has an outside agency suggested evacuation for public protection (forestry, health authority, fish and wildlife Earthquake Canada etc.)				
	Has an outside agency indicated an that there is an imminent threat to the public that could potentially require evacuation				
Available Resources	Has an incident historically prompted an evacuation				
	Are there enough resources locally to facilitate an evacuation				
	Is there enough time to evacuate				
	Is an evacuation centre accessible				
	Is the evacuation centre affected by the emergency				
	Is there a mass emergency affecting multiple jurisdictions that may be affecting resource availability				





### 2.3.2 Evacuation Trigger Points

Evacuation trigger points are determined based on the proximity of a threat to the local population. They are typically geographical locations that, once crossed by a hazard, triggers actions taken to issue evacuation alerts and / orders.

The locations of trigger points are determined based on an assessment of the threat, the rate of advancement and current and forecasted conditions. Points should remain flexible as situations may rapidly change without notice. The Incident Commander, in conjunction with the EOC Director and Evacuation Group Leader will determine appropriate trigger points. Wherever possible, technical specialists should assist in developing trigger points.

The table below outlines possible actions to be taken at certain trigger points.

**Note:** Certain actions can only be taken where time permits.

Distance to Threat (Hours)	EOC Activation Level	Evacuation Response Actions
0 – 12	3	<ul style="list-style-type: none"><li>• Activate EOC or Alternate EOC (full activation)</li><li>• Declare a SOLE</li><li>• Confirm activation of CRD or Provincial EOC</li><li>• Establish evacuation zone(s) and evacuation routes</li><li>• Issue Evacuation Order (See Appendix D for Script)<ul style="list-style-type: none"><li>○ Initiate West Shore Alert Message</li><li>○ Update Social Media Sites (Facebook, Twitter)</li><li>○ Use physical means where possible:</li><li>○ Door-knocking and loud hailer</li></ul></li><li>• Establish roadblocks</li><li>• Cordon off area (for small isolation zone)</li><li>• Activate reception centres (for extended durations and / or where damage is extensive, and residents will require temporary shelter)</li></ul> <p><b>Additional Actions (time permitting and as required):</b></p> <ul style="list-style-type: none"><li>• Contact CRD Emergency Program</li><li>• Mobilize evacuee transportation to collection / muster points</li><li>• Contact BC Transit for evacuation support if possible</li><li>• Conduct aerial survey to locate transient population and / or recreational users</li><li>• Notify medical facilities of mass casualties</li><li>• Activate Mutual Aid Agreements and request support where needed</li></ul>



Distance to Threat (Hours)	EOC Activation Level	Evacuation Response Actions
12-24	3	<ul style="list-style-type: none"> <li>• Activate EOC (full activation)</li> <li>• Place alternate EOC on standby</li> <li>• Contact CRD and Province and confirm standby of EOC</li> <li>• Determine evacuation zone(s) and evacuation routes</li> <li>• Issue Evacuation Alert (See Appendix D for Script)               <ul style="list-style-type: none"> <li>○ Issue West Shore Alert Message</li> <li>○ Update Social Media Sites (Facebook, Twitter)</li> </ul> </li> <li>• Pre-determine roadblock locations and assignments</li> <li>• Contact BC Transit as potential evacuation support and determine collection points for evacuees</li> <li>• Place transportation resources on standby</li> <li>• Place reception centres on standby</li> <li>• Notify Mutual Aid partners of potential resource needs</li> <li>• Close non-essential services / business and schools</li> <li>• Consider transportation of vulnerable population and livestock</li> <li>• Continue to monitor the situation</li> </ul>
24-36	3	<ul style="list-style-type: none"> <li>• Activate EOC (full activation)</li> <li>• Issue Evacuation Alert</li> <li>• Consider closure of non-essential services / business and schools</li> <li>• Consider transportation of vulnerable population and livestock</li> <li>• Continue to monitor the situation</li> <li>• Notify Province and CRD and confirm EOC activation / standby</li> </ul>
36-48	2	<ul style="list-style-type: none"> <li>• Activate EOC (partial activation)</li> <li>• Commence tactical evacuation planning</li> <li>• Identify and prioritize evacuation zone(s), collection points and evacuation routes</li> <li>• Issue Public Notice</li> <li>• Identify roadblock locations and assignments</li> <li>• Identify transportation needs</li> <li>• Identify reception centre needs (location, capacity, supplies etc.)</li> <li>• Identify external emergency resource needs (police, fire, Ambulance)</li> <li>• Place resources and personnel on standby</li> <li>• Contact CRD and Province confirm standby of EOC</li> <li>• Continue to monitor the situation</li> </ul>
48+	1	<ul style="list-style-type: none"> <li>• Activate EOC (partial activation)</li> <li>• Contact technical specialists to validate trigger points</li> <li>• Identify special needs facilities and vulnerable populations</li> <li>• Contact CRD and confirm standby of EOC</li> <li>• Identify evacuation resource requirements</li> <li>• Contact MAA partners to determine resource availability</li> <li>• Monitor the situation (See Section 2.3.1 Threat Level Monitoring Table)</li> </ul>



## **2.3.3 Vulnerable Population**

### **2.3.3.1 Special Facilities**

Special facilities are responsible for the welfare of their patients and clients. They are required to maintain an emergency plan which includes provisions for evacuation. Whenever possible, advanced warning should be given to special facilities for them to effectively implement their evacuation plans.

Special Facilities Include:

- Hospitals
- Health clinics
- Special nursing facilities
- Nursing homes
- Assisted living centres (for disabled and elderly)

If an evacuation of these facilities is required, patients should be transported with the appropriate medical and / or security support to a facility that is comparable in capability of standard of care. The facility operator is responsible for making these arrangements, however when there is insufficient time to do so, they may request assistance from BC Emergency Health Services.

*See Appendix A Vulnerable Population and Critical Infrastructure*

### **2.3.3.2 Special Needs Population**

Special needs populations are those individuals which will require evacuation assistance in the form of transportation and shelter and possibly some medical assistance.

These include, but are not limited to:

- Home bound elderly
- Public transportation dependent individuals and families
- Economically isolated individuals and families

Whenever possible, provisions should be made to ensure that these populations are included and accounted for in evacuation planning. Planning for special needs populations may include multi-lingual messaging, collection points within proximity to economically isolated regions, door-to-door transportation from homes to temporary housing.



### **2.3.3.3 Schools and Childcare**

If an evacuation of a school is required, students should be transported by bus to another facility (typically another school when possible) outside of the risk area, where they can be picked up by a parent or guardian. The public should be immediately notified of these arrangements to facilitate a timely transfer and reduce the risk of those attempting to gain access to an unsafe site.

**When there is advanced warning of an emergency, schools should be closed.**

*See Appendix A Vulnerable Population and Critical Infrastructure*

### **2.3.3.4 Non-residents and Seasonal Visitors**

Evacuation planning and response must account for expected increases in population due to tourism (seasonal) and during special events. Efforts should be made when possible to contact event organizers and tourist facilities including hotels, inns and lodges in order to anticipate additional evacuation assistance that may be required in form of shelter, supplies and transportation.

In situations where there is enough advanced warning of an emergency, organized events and tourist facilities should consider suspending activity.

## **2.3.4 Levels of Evacuation**

### **2.3.4.1 Alert**

An Alert indicates that there is a potential for the full or partial evacuation of all or a portion of the City. No emergency actions are required however conditions should be monitored closely by the EOC Director, and public notices should be issued accordingly i.e. stream flow advisories, rainfall warnings etc.

### **2.3.4.2 Level One**

Normal "Level One" evacuation will be initiated by the on-scene emergency services, i.e. small flood, hazmat release. Persons will normally make their own arrangements and stay with friends, relatives or neighbours. Emergency services on the scene shall keep record of names, addresses and telephone numbers of where these people may be located.

### **2.3.4.3 Level Two**

Involves greater numbers of people displaced due to a large flood, or small wildfire etc. or persons evacuated who have no place to stay and require assistance. This will require involvement of other agencies, (i.e. Emergency Support Services, etc.) for assistance, registration, and placement. Coordination of services by the Emergency Program Coordinator is required.



#### **2.3.4.4 Level Three**

A disaster causing large-scale evacuation such as extensive flooding, or out of control wildfire. Overall coordination of direction will be provided through the establishment of the EOC. Operational control will be established through an on-scene incident command post.

### **2.3.5 Evacuation Stages**

#### **2.3.5.1 Tactical Evacuation**

When an incident occurs with little or no warning, a tactical evacuation is conducted by emergency responders at the scene (Fire, Police and Ambulance) for the immediate protection of life and health. The EOC Director will be immediately notified for additional support in issuing formal declaration of SOLE, issuing formal evacuation orders / alerts, and procuring additional resources and expanding evacuation orders as necessary.

#### **2.3.5.2 Stage 1 - Evacuation ALERT**

A process to alert the population at risk of the potential need for evacuation. The Evacuation Alert advises that because of the danger they should be prepared to evacuate the area. This Evacuation Alert may allow the population at risk to begin an orderly preparation to voluntarily leave the affected area, within a specified time frame. However, the reality of the situation may require immediate action with very short notice.

#### **2.3.5.3 Stage 2 - Evacuation ORDER**

An Evacuation Order will only be issued by authorities in response to the imminent danger and potential of loss of life or injury to the population at risk in the affected area. These notices are issued in the interest of LIFE SAFETY. Members of the Police, Local Fire Departments, and the Local Authorities may be involved in expediting that action through door-to-door contact, the electronic media and West Shore Alert.

#### **2.3.5.4 Stage 3 - Evacuation RESCIND**

The population at risk is allowed to return to the area previously evacuated, having been advised that the danger has passed. There is the possibility that the danger may re-manifest itself and the Evacuation Notification might need to be re-instated.



### 2.3.6 Evacuation Zones

Evacuation Zones have been determined based on an evaluation of flood risk, wildfire risk etc. in relation to population density, available evacuation routes and locations of reception centres.

Upon issuing an Evacuation Order or Alert, emergency personnel should be assigned to each zone to facilitate the movement of traffic out of the evacuation zones.

*Table 3: Detailed Maps of each Zone are located the Appendix E.*

Zone 1	This area consists of the portion of the City north of Highway 1 and bordered by Goldstream Provincial Park to the east. It is primarily a residential area, and does have recreational areas visited by local and out of town residents (Bear Mountain Golf Resort, Thetis Lake Regional Park).
Zone 2	This area is the western most portion of the City, bordered by Highway 1 to the north and along Langford Lake and the West Shore Parkway to the east along Sooke Rd to the south. The area is currently growing with schools and additional expansion and recreational park space. The local water treatment centre is however located in this area.
Zone 3	This area spans the south side of highway 1 along Langford Lake / West Shore Parkway to the east and Veteran's Memorial Parkway to the west as well as Sooke Rd to the south. It is the most densely populated area and consists of a mix of business and residential areas. Most important emergency services, schools and vulnerable populations are located within this area.
Zone 4	This is the most eastern portion of the City, with the Highway 1 bordering the north, Veteran's Memorial Parkway to the west and the City limits to the south and east. The area is primarily a residential area with few easily accessible evacuation routes.
Zone 5	This is the southern portion of the City, which is everything south of Sooke Rd and follows City limits to the east, west and south. It is not a densely populated area and consideration may be given to evacuate this portion of the City through the neighbouring community of Colwood (situation dependent).
Zone 6	This area mainly consists of Goldstream Provincial Park and a small community at the northern most City limits. The challenges faced by this region are the frequent travellers on the Highway 1 in both directions, yet limited evacuation options to the north.



### **2.3.7 Reception Centres**

The number and location of Reception Centres that will be activated, will be determined by the EOC Director and based upon:

- Proximity to the emergency
- Available travel routes from the local of the emergency
- Safety of the area
- Number of people evacuated

If time does not permit to fully activate reception centres, evacuees may be directed to one or more reception centres as an initial assembly point, where they can be reassigned to a permanent reception centre once it has been fully activated. Personnel should be immediately dispatched to reception centres and/or initial assembly points and begin to register evacuees.

### **2.3.8 Transportation Logistics**

The assistance of individuals without their own means of transportation will require additional resources and cooperative assistance from the community. Vulnerable populations and those with special needs will require relocation assistance.

Hazard mapping maybe used to assist the Emergency Operations Center Command Staff in determining the priorities for evacuation and assistance required for those vulnerable populations.

The intent of the transportation plan is to minimize the negative consequences of evacuees being trapped by a threat from flooding, wildfire, hazardous substance etc. Evacuation routes will made available to all emergency response agencies and the public prior to an emergency.

This information combined with Emergency Management BC's Common Operating System will assist in transportation needs assessment. The Command Staff will activate a request for additional resources through the Logistics Section. These resources may include a mutual aid request to the Canadian Forces (19 Wing), located in Comox, to provide overhead visual reference of changing conditions.

### **2.3.9 Emergency Transportation Planning**

There is no formal transportation agreement between the City of Langford and any private or government owned transportation group, however there are extensive resources available within city limits and neighbouring communities that could be drawn upon where time permits. In the event of a foreseeable evacuation event, BC Transit should be contacted in order to evaluate the potential for using resources and routes to facilitate an evacuation. Transit lines are often located in close proximity to the most vulnerable populations that may be without transportation means. Major collection points (Langford / Downtown) should be identified and communicated to the public.



Whenever possible, transportation plans should be developed with appropriate partners as soon as time permits when there exists a potential or imminent threat of evacuation.

### **2.3.10 Evacuation Routes**

Primary evacuation routes have been modelled based on population density, accessibility, road reliability, as well as accounting for those that may have accessibility challenges. Emergency service crews should be immediately dispatched to assigned evacuation zones to facilitate lane reversals, traffic flow and road blocking. Evacuation routes must take into account the estimated threat arrival time and traffic peak times. Certain conditions may not allow for complex traffic re-routing (*see Appendix E for Evacuation Map*).

#### **2.3.10.1 Zone 1**

Zone 1 will be evacuated using two primary routes – Bear Mountain Parkway to Leigh Road and Millstream Rd to Highway 1 and / or to McCallum Rd to Leigh Rd. There are concrete barriers at McCallum Rd that could potentially be removed to facilitate an alternate to Leigh Rd. Time permitting, a lane reversal on Millstream Rd can be used to facilitate more southbound traffic, however the Millstream overpass can be challenging. This zone should only be evacuated in a southbound direction unless there is an immediate and pressing need to evacuate that cannot be facilitated to the south i.e. rapidly approaching wildfire, washed out roads etc.

#### **2.3.10.2 Zone 2**

Zone 2 will be evacuated using northbound West Shore Parkway to Highway 1. Traffic can alternately be routed south to Sooke Rd, however this is a single lane road that could also be receiving evacuees from Zone 5. Humpback Road can be used as an alternate route for residents in the southwest corner of Zone 2, however this road is not reliable and not recommended. There is also a locked gate on this road at the railroad – Police and Fire have access keys.

#### **2.3.10.3 Zone 3**

This zone has the highest concentration of potential evacuees and may be evacuated in several directions depending on time constraints, nature and location of the emergency. The zone can be evacuated north to Highway 1, and / or east through Colwood. There are also accessible routes to the north and west via Langford Parkway, however evacuating one zone via another should be avoided when the potential for a mass regional evacuation exists. NOTE: a dedicated route for emergency services out of this zone should be prioritized based on nature and location of the emergency. This can be facilitated through lane reversal and / or closures on Langford Parkway or Veterans Memorial Parkway. Barricades on Spencer Rd and McCallum Rd can be removed to facilitate traffic in south and north bound direction (respectively).





#### **2.3.10.4 Zone 4**

The eastern portion of this zone will be evacuated using Atkins Rd to Six Mile Rd. The western portion should be evacuated to the north following Selwyn Rd or south using Goldstream Ave to Highway 14. In the event of a concurrent evacuation of Zones 3 and 4, lane reversals on Veteran's Memorial and / or route re-direction of Zone 4 evacuees heading west should be considered. Consideration should also be given to establishing access to and from St. Anthony's Primary Care Centre located on Goldstream Ave.

#### **2.3.10.5 Zone 5**

Zone 5 can be evacuated using Happy Valley Rd or Latoria Rd to Veterans Memorial Parkway. Consideration must be given to other zones that may be evacuating as well as whether the neighbouring community Colwood (which may also be experiencing an emergency) can accept additional local traffic in this area.

#### **2.3.10.6 Zone 6**

Whenever possible, traffic for this zone should be directed south on Highway 1 and avoid heading north due to lack of resources and reliability of alternate routes.

## **2.6 Emergency Alerting Systems**

A critical factor in minimizing risk to life and loss of property is rapid notification to the public and all relevant stakeholders.

Once an event has been reported, the EOC Director or Emergency Program Coordinator may initiate an emergency notification to the public.

### **2.6.1 West Shore Alert**

West Shore Alert is a web based messaging system capable of sending mass notification to registered users in voice, text and email format. This tool enables pre-determined groups of individuals to simultaneously receive pre-scripted messages. The system can be accessed by computer or through a licensed iPhone App. The system is primarily used to send notifications to registered residents.

In the event that an Evacuation Alert or Evacuation Order is given, an information brief will be sent in all three formats (voice, text and email) to registered residents and lead stakeholder agencies:

- City of Langford – EOC Designated Staffing roster for Sections Chiefs
- Emergency Agencies:
  - Fire Service
  - BC Ambulance
  - RCMP



### **2.6.2 Alert Ready**

Alert Ready is Canada's Mass Alerting System. It is used to broadcast lifesaving emergency information through television, radio and LTE-connected and capable wireless devices. No subscription is required to receive alerts on wireless devices.

In the event of an imminent emergency requiring a mass evacuation, Emergency Management BC can activate the Alert Ready System to distribute a pre-approved emergency alert to the region Langford. Note: this system will be activated in the event of a major earthquake / tsunami warning event.

### **2.6.3 Public Evacuation Scripts**

Pre-approved public evacuation scripts are critical to ensure that notification and response times are maximized, particularly in an evacuation event. Scripts are pre-populated into the Westshore Alert messaging system, detailing emergency evacuation procedures, routes and maps. Scripts have also been distributed for use by Emergency Management BC to ensure redundancy with between the local and provincial systems in the event of a communications disruption. *Refer to Appendix D for pre-approved Scripts.*

### **2.6.4 Access Control and Security**

Security in evacuated areas is extremely important to protect the health and safety of the population outside of the evacuation zone, and to protect property within the evacuation zone.

Law enforcement and / or the City of Langford Bylaw Enforcement will establish roadblocks to limit entry into evacuated areas and, where possible, conduct periodic roving patrols within such areas to deter theft by those on foot. To the extent possible, fire departments may take measures to ensure continued fire protection.

If an evacuated area has sustained damage and cannot be reoccupied for an extended period of time, a sign-in / sign-out protocol may be required, to monitor and limit access to emergency workers, homeowners, business owners, utility workers, and contractors restoring damaged structures and removing debris.

### **2.6.5 Recall of Evacuees**

Following the call-down of an emergency, when safe to do so, Evacuation Rescind will be issued. All evacuated persons will be contacted using the contact information provided at the time of evacuation. Social media outlets will also be updated with information regarding re-entry protocols etc. The Reception Centre, if established, will remain open until all the evacuated public has been advised of the call-down / rescind.



### **2.6.6 Re-entry Protocol**

Evacuees returning to their homes or businesses in evacuated areas require the same consideration, coordination, and control as the original evacuation. For short-term incidents, the Incident Commander will normally make the decision to return evacuees and disseminate the message at the incident location as appropriate. For large-scale evacuations, the decision will normally be made by the EOC Director and disseminated through the media (via the Information Officer).



## APPENDIX A - VULNERABLE POPULATIONS AND CRITICAL INFRASTRUCTURE

Zone 1					
Facility Type	Facility Name	Units	Capacity	Address	Main Number
Childcare	Kids Klub – Lakewood Elementary		20	2636 Setchfield Road	250-478-1566
Childcare	Compass Childcare		36	2285 Bellamy Road	250-294-6765
Childcare	Westshore Community Daycare		37	2207 Millstream Rd	250-915-1602
Recreation	All Fun Recreation Centre/Western Speedway			2207 Millstream Rd	250-474-1961
Recreation	Bear Mountain Golf Resort			1999 Country Club Way	250-391-7160
School	Lakewood Elementary			2363 Setchfield Ave	250-474-3449
School	Millstream Elementary			626 Hoylake Ave	250-478-8348
Hotel	Four Points Sheraton			829 McCallum Rd	250-474-6063
Hotel	The Westin Bear Mountain			1999 Country Club Way	250-391-7160
Church	Westshore Alliance Church			2207 Millstream Rd	250-474-8875
Mobile Home Park	Hidden Valley Mobile Home Park			2500 Florence Lake Rd	
Zone 2					
Facility Type	Facility Name	Units	Capacity	Address	Main Number
Childcare	Belmont Early Learning Centre		29	3041 Langford Lake Road	250-893-9461
Childcare	Happy Campers OSC Willway		24	2939 Mt. Wells Drive	250-478-1213
Recreation	YMCA/Westhills Library			1319 Westhills Dr	250-386-7511
School	Belmont Secondary School			3041 Langford Lake Rd	250-478-5501
School	Willway Elementary			2939 Mt Wells Dr	250-478-1213
Mobile Home Park	Goldstream Mobile Home Park			2807 Sooke Lk Rd	
Mobile Home Park	Mobile Home Park			2911 Sooke Lake Rd	
Critical Infrastructure	CRD Water Treatment Facility				
Critical Infrastructure	Fire Hall #3			2872 Sooke Lake Rd	250-478-7770



Zone 3					
Facility Type	Facility Name	Units	Capacity	Address	Main Number
Childcare	Happy Campers Bray		25	953 Bray Avenue	250-391-0909
Childcare	Hi Kids Early Learning Education and Child Care Centre		33	1289 Parkdale Drive	250-478-5436
Childcare	CEFA Early Learning Victoria – Langford		88	3030 Merchant Way	778-265-9986
Childcare	Almosthome Gordon		20	935 Goldstream Ave	250-590-7666
Childcare	Happy Campers OSC Dunford		25	948 Dunford Ave	250-661-8578
Childcare	Happy Campers OSC Forge		31	2612 Sooke Road	250-661-8512
Childcare	Happy Campers OSC Orono		20	809 Orono Ave	250-391-0909
Childcare	Kids & Company Langford		72	965 Langford Parkway	250-433-7238
Childcare	Kids Klub Western#1		24	935 Goldstream Ave	250-478-7571
Childcare / Preschool	Our Lady of the Rosary Preschool and Child Care			2750 Claude Rd	250-474-1926
Childcare	Willowbrae Childcare Academy Langford		94	2780 Veterans Memorial Pkwy	250-883-9958
Seniors Living	Alexander Mackie Lodge			753 Station Ave	250-478-4888
Seniors Living	Cherish at Central Park			917 Avrill Rd	250-478-4431
Seniors Living	Jeskin Aerie			817 Goldstream Ave	250-474-1524
Seniors Living	Prince Edward Lodge			741 Station Ave	250-474-6133
School	Ruth King Elementary School			2764 Jacklin Rd	250-478-8368
School	Lighthouse Christian Academy			1289 Parkdale Dr	250-474-5311
School	Spencer Mills Middle School			1026 Goldstream Ave	250-474-1291
Recreation	Cineplex at Westshore				
Recreation	Eagle Ridge Community Centre			1089 Langford Pkwy	250-391-1738
Community Centre	Royal Canadian Legion			761 Station Ave	250-478-1828
Recreation	City Centre Park			1089 Langford Pkwy	250-391-1738
Church	Our Lady of the Rosary			790 Goldstream Ave	250-478-3482
Church	Grace Baptist Church			2731 Matson Rd	250-474-7283
Church	Gordon United Church			935 Goldstream Ave	250-478-6632
Church	The Forge Church			2612 Sooke Rd	250-478-8379



Facility Type	Facility Name	Units	Capacity	Address	Main Number
Mobile Home Park	Tri Way Mobile Home Park			2780 Spencer Rd	
Mobile Home Park	Wood Park Mobile Home Park			848 Hockley Ave	
Critical Infrastructure	BC Hydro Substation			Jacklin Rd/Langford Parkway	
Critical Infrastructure	RCMP			698 Atkins Ave	250-474-2264
Critical Infrastructure	Fire Hall #1			2625 Peatt Rd	250-478-7770
Critical Infrastructure	Ambulance (Province-wide)			2764 Leigh Rd	250-953-3298
Zone 4					
Facility Type	Facility Name	Units	Capacity	Address	Main Number
Seniors Living	Fairway Woods			597 Goldstream Ave	250-474-0526
Seniors Living	Priory			567 Goldstream Ave	250-370-5626
School	Savory Elementary			2721 Grainger Rd	250-478-9586
School	Crystal View Elementary			2662 Silverstone Way	250-478-0576
Health Centre	Westshore Urgent Care			582 Goldstream Ave	250-519-6919
Church	Kingdom Hall of Jehovah's Witnesses			2506 Selwyn Rd	403-569-8258
Mobile Home Park	Arbutus Ridge Estates			2587 Selwyn Rd	
Mobile Home Park	Creekside Park			2607 Selwyn Rd	
Hotel	Solo Suites		20	590 Goldstream Ave	
Zone 5					
Facility Type	Facility Name	Units	Capacity	Address	Main Number
Childcare	Summer Breeze Early Care and Learning Centre		76	1028 Lomalinda Drive	250-474-1368
Childcare	The learning Journey Child Care Centre		40	3650 Happy Valley Rd	250-812-0865
Childcare	Almosthome Child Care		25	1040 Marwood Ave	250-590-7666
Childcare	Alphabet Zoo Early Learning Centre		28	2619 Sooke Road	778-265-1337
School	Happy Valley Elementary			3291 Happy Valley Rd	250-478-3232
Recreation	SVI Ranger Station (Luxton)				
Critical Infrastructure	Fire Hall #2			3205 Happy Valley Rd	250-478-7770



*This page has been left blank intentionally.*



## APPENDIX B – SUPPORT SERVICES

Emergency / Medical Services	
BCEHS – Air Ambulance	250-953-3298
RCMP	250-474-2264
Emergency Support Services	250-857-0535
BC Government Agencies	
Emergency Management BC (EMBC)	1-800-663-3456
BC Transit – Langford Transit Centre	250-382-6161
City of Langford Bylaw Duty Cell	250-587-0400
Local Resources	
EMCON	1-866-353-3136
Victoria Contracting (VCMCMC)	250-474-2688





*This page has been left blank intentionally.*



## APPENDIX C – EMERGENCY OPERATIONS AND RECEPTION CENTRES

City of Langford Emergency Operations Centres (EOC)				
Facility Name	Amenities	Address	Main Number	After Hours
Fire Hall #1		2625 Peatt Road	250-478-9555	250-478-7770
Fire Hall #2		3205 Happy Valley Rd	250-478-9555	250-478-7770
Fire Hall #3		2872 Sooke Lake Rd	250-478-9555	250-478-7770
City of Langford Reception Centres				
Facility Name	Amenities	Address	Main Number	After Hours
Royal Canadian Legion	Meeting space, kitchen	761 Station Ave	250-478-1828	
Eagleridge Community Centre	Meeting space, kitchen, showers	1089 Langford Parkway	250-391-1738	
Crystalview Elementary	Meeting space, kitchen	2662 Silverstone Way	250-478-0576	
Happy Valley Elementary	Meeting space, kitchen	3291 Happy Valley Rd	250-478-3232	
Lakewood Elementary	Meeting space, kitchen	2363 Setchfield Ave	250-474-3449	
Willway Elementary	Meeting space, kitchen	2939 My Wells Dr	250-478-1213	
Gordon United Church	Meeting space, kitchen	935 Goldstream Ave	250-478-6632	
SVI Ranger Station	Meeting space, kitchen	3498 Luxton Rd	250-478-1369	



*This page has been left blank intentionally.*



## APPENDIX D – SCRIPTS

### Evacuation Alert

This is an important safety message.

Due to the risk of (event name) \_\_\_\_\_ residents and visitors in the following area should **be prepared to evacuate in less than 30 minutes** if ordered by emergency officials. The area under evacuation alert is:

South boundary: \_\_\_\_\_ / North boundary: \_\_\_\_\_

East Boundary: \_\_\_\_\_ / West Boundary: \_\_\_\_\_

#### WHAT YOU SHOULD DO

- Confirm a safe meeting place for all family members or co-workers in the event that an evacuation order is called.
- Ensure personal Grab & Go kits/backpack(s) are ready for quick departure - including essential items such as medications, eyeglasses, valuable papers (i.e. insurance), immediate care needs for dependents and, if you choose, keepsakes (photographs, etc.). Have these items readily available for a quick departure.
- Consider in advance moving any disabled persons and/or children to a safe area.
- Move pets and livestock to a safe area.
- Arrange to transport your household members or co-workers in the event of an evacuation order.
- Arrange accommodations for your family if possible. In the event of an evacuation, emergency accommodation will be provided if required.
- Monitor news outlets and local government websites for information on reception centre location and status of evacuation orders.

#### IF YOU HAVE TO EVACUATE

- Listen to the radio and follow instructions from local emergency officials.
- Take Grab & Go kits/backpacks.
- If you are instructed to do so, shut off water, gas and electricity.
- Make arrangements for your pets. Local support services will do their best to assist you.
- Wear clothes and shoes appropriate for the conditions.
- Lock your home.
- Follow the routes specified by emergency officials. Don't take shortcuts. A shortcut could take you to a blocked or dangerous area.
- If you have time, leave a note telling others when you left and where you went. If you have a mailbox, leave the note there.
- If you have time turn off all outside water sprinklers so water is conserved for firefighting efforts.
- Once you have left the evacuated area, register at the emergency reception centre at the \_\_\_\_\_ (location) \_\_\_\_\_ so you can contact and be reunited with others.

This alert issued at (month, day, year) at (time) will remain in force for seven days until (month, day, year) at (time) unless cancelled by the local government.



## Evacuation Order

Date: (month, day, year) \_\_\_\_\_ Local time (24 hour): \_\_\_\_\_

The (local authority) \_\_\_\_\_ have been advised of imminent danger of (event type i.e. interface fire) \_\_\_\_\_ to the life and property of residents and visitors in the areas outlined on the attached map and described below within the local governments area of responsibility.

South boundary: \_\_\_\_\_ / North boundary: \_\_\_\_\_  
East Boundary: \_\_\_\_\_ / West Boundary: \_\_\_\_\_

All persons within the defined area are to evacuate via (provide official evacuation route to a destination) \_\_\_\_\_. Please follow all road directions from authorities.

Based on this information, an order pursuant to Section 13(1) of the Emergency Program Act to evacuate these areas has been authorized in the interest of life and safety.

Members of the (Police Department with jurisdiction i.e. RCMP) \_\_\_\_\_ and other agencies will be expediting the evacuation of these areas on behalf of (local government) \_\_\_\_\_.

Evacuees are asked to register with Emergency Social Services at the determined (ESS facility) \_\_\_\_\_-located\_at\_(address) \_\_\_\_\_.

The (local authority) \_\_\_\_\_ Emergency Operations Centre is open and is providing support to the Emergency Social Services centres and other emergency responders. The (local authority) \_\_\_\_\_ has established a public information line (number) \_\_\_\_\_ for information related to the (event type) \_\_\_\_\_.

**YOU MUST LEAVE THIS AREA IMMEDIATELY.**

Mayor/ Alternate or CAO: \_\_\_\_\_

Local Authority: \_\_\_\_\_

Date: \_\_\_\_\_



## Evacuation Rescind

Date: (month, day, year) \_\_\_\_\_

Local time (24 hour): \_\_\_\_\_

The \_\_\_\_\_ has been advised that the imminent risk of danger to life and property in your area has diminished at this time.

The Evacuation Order, pursuant to (*Cite Authority*) is therefore rescinded.

An Evacuation Alert / Order may need to be reinstated, therefore the process would re-commence.

Signature \_\_\_\_\_

Local government name \_\_\_\_\_

Date \_\_\_\_\_

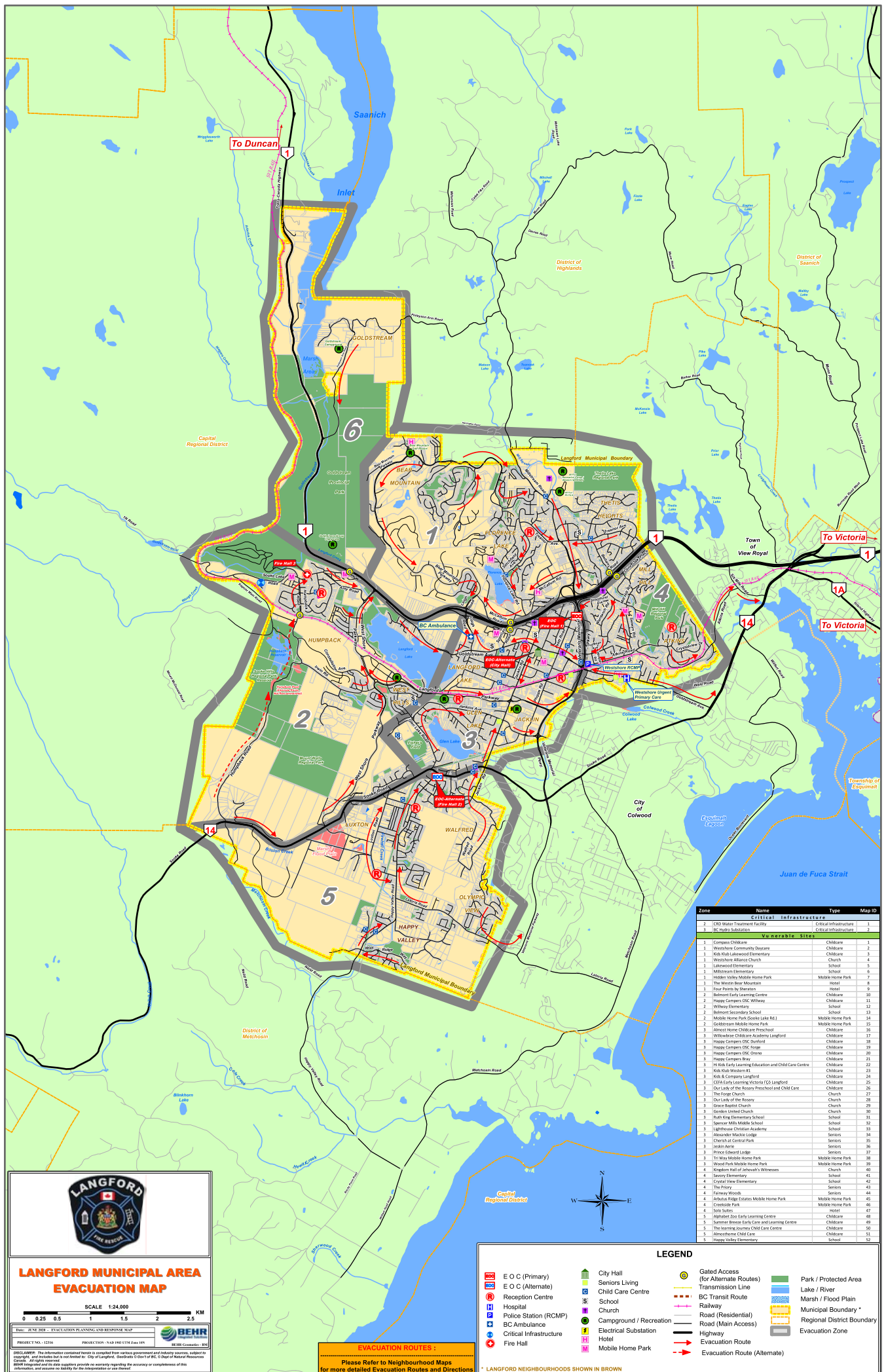


*This page has been left blank intentionally.*



## **APPENDIX E - MAPS**

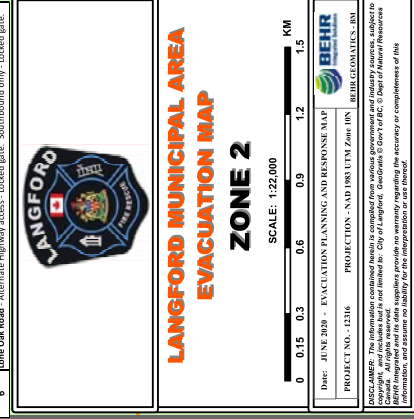








ZONE	CRITICAL	NAME	INFRASTRUCTURE	TYPE	MAP ID
2	CRD	Water Treatment Facility		Critical Infrastructure	1
	IC	Hydro Substation		Critical Infrastructure	2
VULNERABLE SITES					
1	Compass Children's		Children's	Children's	1
1	Westshore Community Daycare		Children's	Children's	2
1	Kids Klub Lakewood Elementary		Children's	Children's	3
1	Westshore Alliance Church		Church	Church	4
1	Lakewood Elementary		School	School	5
1	Millstream Elementary		School	School	6
1	Millstream Valley Mobile Home Park		Mobile Home Park	Mobile Home Park	7
1	Millstream Valley Community		Community	Community	8
1	Four Points by Sheraton		Hotel	Hotel	9
2	Beimont Early Learning Centre		Children's	Children's	10
2	Happy Campers OSC Willway		Children's	Children's	11
2	Willway Elementary		School	School	12
2	Beimont Secondary School		School	School	13
2	Golden Home Park (Sooke side Rd.)		Mobile Home Park	Mobile Home Park	14
2	Golden Home Park (Sooke side Rd.)		Mobile Home Park	Mobile Home Park	15
3	Willowbrook Children's Academy	Langford	Children's	Children's	16
3	Almonvale Children's Academy	Langford	Children's	Children's	17
3	Happy Campers OSC Dunford		Children's	Children's	18
3	Happy Campers OSC Forde		Children's	Children's	19
3	Happy Campers OSC Orofino		Children's	Children's	20
3	Happy Campers Day		Children's	Children's	21
3	Happy Campers Day		Children's	Children's	22
3	Happy Campers Day		Children's	Children's	23
3	Kids Klub Western B.C.		Children's	Children's	24
3	Kids & Company Langford		Children's	Children's	25
3	CEFA Early Learning Victoria Langford		Children's	Children's	26
3	Our Lady of the Rosary Preschool and Child Care		Children's	Children's	27
3	The Forge Church		Church	Church	28
3	Our Lady of the Rosary		Church	Church	29
3	Our Lady of the Rosary		Church	Church	30
3	Ruth King United Church		Church	Church	31
3	Gordon King Elementary School		School	School	32
3	Spencer Mills Middle School		School	School	33
3	Lighthouse Christian Academy		School	School	34
3	Alexander Mackenzie Lodge		Seniors	Seniors	35
3	Church of Central Park		Seniors	Seniors	36
3	Prince Edward Lodge		Seniors	Seniors	37
3	Trinity Way Mobile Home Park		Mobile Home Park	Mobile Home Park	38
3	Wood Park Mobile Home Park		Mobile Home Park	Mobile Home Park	39
4	Kingdom Hall of Jehovah's Witnesses		Church	Church	40
4	Seniors Elementary		School	School	41
4	Seniors Elementary		School	School	42
4	Seniors Elementary		School	School	43
4	Seniors Elementary		School	School	44
4	Arbutus Ridge Estates Mobile Home Park		Mobile Home Park	Mobile Home Park	45
4	Creskide Park		Mobile Home Park	Mobile Home Park	46
4	Solo Suites		Hotel	Hotel	47
5	Alphabet Zoo Early Learning Centre		Children's	Children's	48
5	Summer Breeze Early Care and Learning Centre		Children's	Children's	49
5	Summer Breeze Early Care and Learning Centre		Children's	Children's	50
5	Almonvale Child Care Centre		Children's	Children's	51
5	Almonvale Child Care		School	School	52
ACCESS DETAILS					
GATE NO.	ACCESS DETAILS				
1	Hampden Road - Locked gate (Fire Dept / City Access Only)				
2	Sooke Lake Road - Alternate highway access - concrete barriers would need to be removed (Southbound access only)				
3	McLachlan Road - Alternate highway access - concrete barriers would need to be removed (Northbound access only)				
4	Spencer Road - Alternate highway access - Locked gate (Southbound access only)				
5	Skelway Road - Alternate highway access - Locked gate (Northbound access only)				





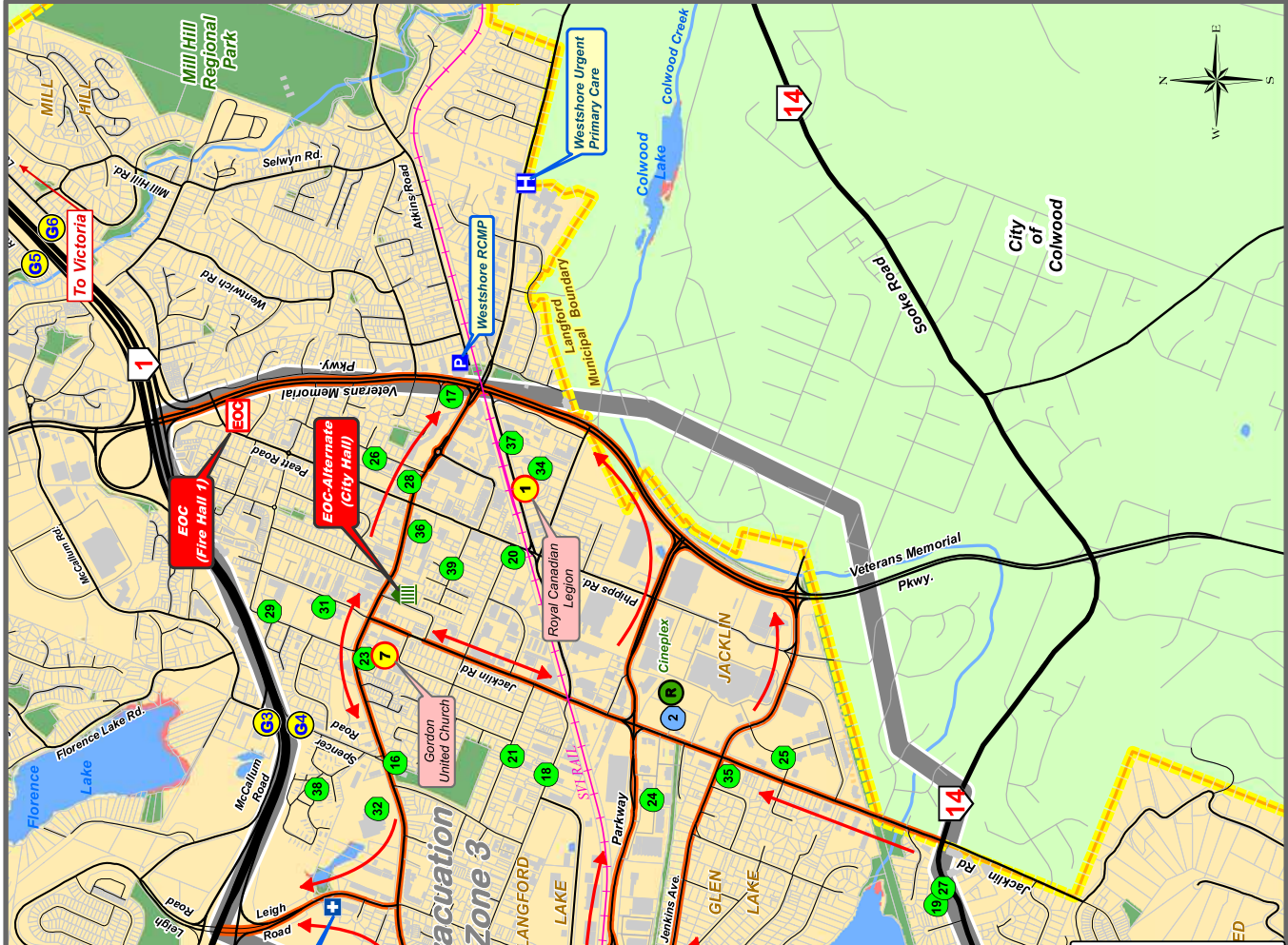
ZONE	NAME	TYPE	MAP ID
1	CRITICAL INFRASTRUCTURE	CRITICAL INFRASTRUCTURE	1
2	CRITICAL INFRASTRUCTURE	CRITICAL INFRASTRUCTURE	2
3	CRITICAL INFRASTRUCTURE	CRITICAL INFRASTRUCTURE	3
4	CRITICAL INFRASTRUCTURE	CRITICAL INFRASTRUCTURE	4
5	CRITICAL INFRASTRUCTURE	CRITICAL INFRASTRUCTURE	5
6	CRITICAL INFRASTRUCTURE	CRITICAL INFRASTRUCTURE	6
7	CRITICAL INFRASTRUCTURE	CRITICAL INFRASTRUCTURE	7
8	CRITICAL INFRASTRUCTURE	CRITICAL INFRASTRUCTURE	8
9	CRITICAL INFRASTRUCTURE	CRITICAL INFRASTRUCTURE	9
10	CRITICAL INFRASTRUCTURE	CRITICAL INFRASTRUCTURE	10
11	CRITICAL INFRASTRUCTURE	CRITICAL INFRASTRUCTURE	11
12	CRITICAL INFRASTRUCTURE	CRITICAL INFRASTRUCTURE	12
13	CRITICAL INFRASTRUCTURE	CRITICAL INFRASTRUCTURE	13
14	CRITICAL INFRASTRUCTURE	CRITICAL INFRASTRUCTURE	14
15	CRITICAL INFRASTRUCTURE	CRITICAL INFRASTRUCTURE	15
16	CRITICAL INFRASTRUCTURE	CRITICAL INFRASTRUCTURE	16
17	CRITICAL INFRASTRUCTURE	CRITICAL INFRASTRUCTURE	17
18	CRITICAL INFRASTRUCTURE	CRITICAL INFRASTRUCTURE	18
19	CRITICAL INFRASTRUCTURE	CRITICAL INFRASTRUCTURE	19
20	CRITICAL INFRASTRUCTURE	CRITICAL INFRASTRUCTURE	20
21	CRITICAL INFRASTRUCTURE	CRITICAL INFRASTRUCTURE	21
22	CRITICAL INFRASTRUCTURE	CRITICAL INFRASTRUCTURE	22
23	CRITICAL INFRASTRUCTURE	CRITICAL INFRASTRUCTURE	23
24	CRITICAL INFRASTRUCTURE	CRITICAL INFRASTRUCTURE	24
25	CRITICAL INFRASTRUCTURE	CRITICAL INFRASTRUCTURE	25
26	CRITICAL INFRASTRUCTURE	CRITICAL INFRASTRUCTURE	26
27	CRITICAL INFRASTRUCTURE	CRITICAL INFRASTRUCTURE	27
28	CRITICAL INFRASTRUCTURE	CRITICAL INFRASTRUCTURE	28
29	CRITICAL INFRASTRUCTURE	CRITICAL INFRASTRUCTURE	29
30	CRITICAL INFRASTRUCTURE	CRITICAL INFRASTRUCTURE	30
31	CRITICAL INFRASTRUCTURE	CRITICAL INFRASTRUCTURE	31
32	CRITICAL INFRASTRUCTURE	CRITICAL INFRASTRUCTURE	32
33	CRITICAL INFRASTRUCTURE	CRITICAL INFRASTRUCTURE	33
34	CRITICAL INFRASTRUCTURE	CRITICAL INFRASTRUCTURE	34
35	CRITICAL INFRASTRUCTURE	CRITICAL INFRASTRUCTURE	35
36	CRITICAL INFRASTRUCTURE	CRITICAL INFRASTRUCTURE	36
37	CRITICAL INFRASTRUCTURE	CRITICAL INFRASTRUCTURE	37
38	CRITICAL INFRASTRUCTURE	CRITICAL INFRASTRUCTURE	38
39	CRITICAL INFRASTRUCTURE	CRITICAL INFRASTRUCTURE	39
40	CRITICAL INFRASTRUCTURE	CRITICAL INFRASTRUCTURE	40
41	CRITICAL INFRASTRUCTURE	CRITICAL INFRASTRUCTURE	41
42	CRITICAL INFRASTRUCTURE	CRITICAL INFRASTRUCTURE	42
43	CRITICAL INFRASTRUCTURE	CRITICAL INFRASTRUCTURE	43
44	CRITICAL INFRASTRUCTURE	CRITICAL INFRASTRUCTURE	44
45	CRITICAL INFRASTRUCTURE	CRITICAL INFRASTRUCTURE	45
46	CRITICAL INFRASTRUCTURE	CRITICAL INFRASTRUCTURE	46
47	CRITICAL INFRASTRUCTURE	CRITICAL INFRASTRUCTURE	47
48	CRITICAL INFRASTRUCTURE	CRITICAL INFRASTRUCTURE	48
49	CRITICAL INFRASTRUCTURE	CRITICAL INFRASTRUCTURE	49
50	CRITICAL INFRASTRUCTURE	CRITICAL INFRASTRUCTURE	50
51	CRITICAL INFRASTRUCTURE	CRITICAL INFRASTRUCTURE	51
52	CRITICAL INFRASTRUCTURE	CRITICAL INFRASTRUCTURE	52

GATE NO.	NAME	TYPE	MAP ID
1	CRITICAL INFRASTRUCTURE	CRITICAL INFRASTRUCTURE	1
2	CRITICAL INFRASTRUCTURE	CRITICAL INFRASTRUCTURE	2
3	CRITICAL INFRASTRUCTURE	CRITICAL INFRASTRUCTURE	3
4	CRITICAL INFRASTRUCTURE	CRITICAL INFRASTRUCTURE	4
5	CRITICAL INFRASTRUCTURE	CRITICAL INFRASTRUCTURE	5
6	CRITICAL INFRASTRUCTURE	CRITICAL INFRASTRUCTURE	6

NAME	TYPE	MAP ID
CRITICAL INFRASTRUCTURE	CRITICAL INFRASTRUCTURE	1
CRITICAL INFRASTRUCTURE	CRITICAL INFRASTRUCTURE	2
CRITICAL INFRASTRUCTURE	CRITICAL INFRASTRUCTURE	3
CRITICAL INFRASTRUCTURE	CRITICAL INFRASTRUCTURE	4
CRITICAL INFRASTRUCTURE	CRITICAL INFRASTRUCTURE	5
CRITICAL INFRASTRUCTURE	CRITICAL INFRASTRUCTURE	6

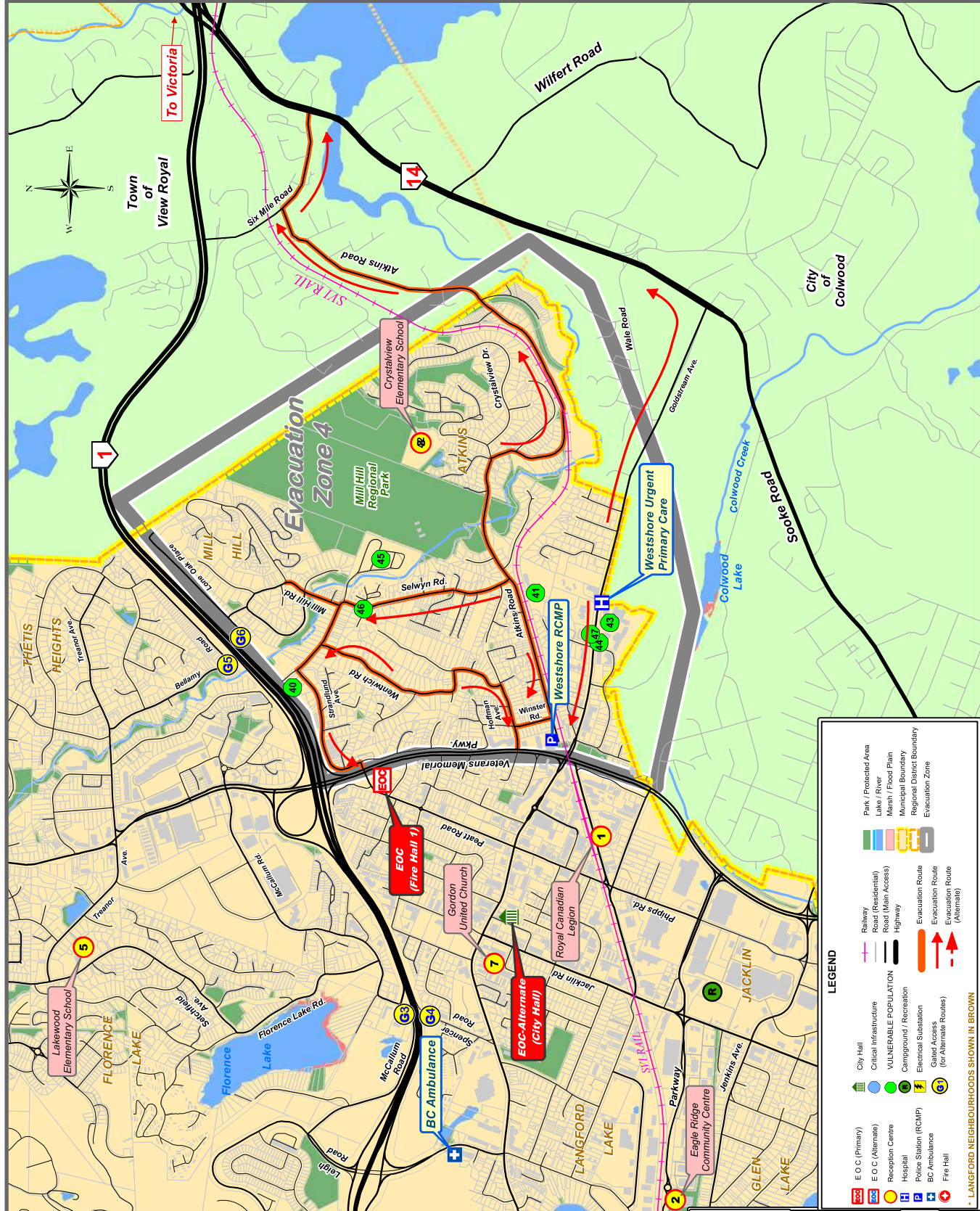
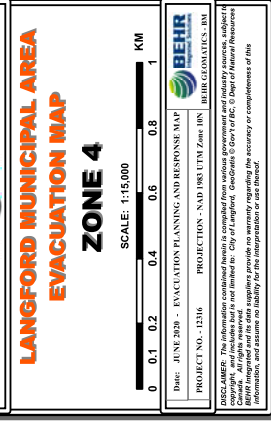
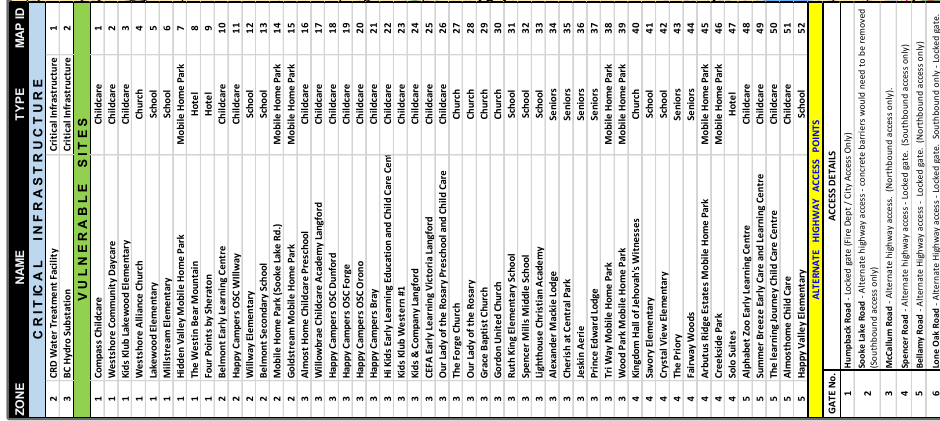
NAME	TYPE	MAP ID
CRITICAL INFRASTRUCTURE	CRITICAL INFRASTRUCTURE	1
CRITICAL INFRASTRUCTURE	CRITICAL INFRASTRUCTURE	2
CRITICAL INFRASTRUCTURE	CRITICAL INFRASTRUCTURE	3
CRITICAL INFRASTRUCTURE	CRITICAL INFRASTRUCTURE	4
CRITICAL INFRASTRUCTURE	CRITICAL INFRASTRUCTURE	5
CRITICAL INFRASTRUCTURE	CRITICAL INFRASTRUCTURE	6

NAME	TYPE	MAP ID
CRITICAL INFRASTRUCTURE	CRITICAL INFRASTRUCTURE	1
CRITICAL INFRASTRUCTURE	CRITICAL INFRASTRUCTURE	2
CRITICAL INFRASTRUCTURE	CRITICAL INFRASTRUCTURE	3
CRITICAL INFRASTRUCTURE	CRITICAL INFRASTRUCTURE	4
CRITICAL INFRASTRUCTURE	CRITICAL INFRASTRUCTURE	5
CRITICAL INFRASTRUCTURE	CRITICAL INFRASTRUCTURE	6



LANGFORD MUNICIPAL AREA  
EVACUATION MAP  
ZONE 3  
SCALE: 1:15,000  
DATE: JUNE 2019 - EVACUATION PLANNING AND RESPONSE MAP  
PROJECT NO.: 1216  
PROJECTION: NAD 1983 UTM Zone 18N  
BEHR GEOMATICS, INC.  
Copyright, and all other rights are reserved by BEHR GEOMATICS, INC.  
All other trademarks and registered trademarks are the property of their respective owners.  
All other trademarks and registered trademarks are the property of their respective owners.









ZONE	NAME	TYPE	MAP ID
<b>CRITICAL INFRASTRUCTURE</b>			
2	CRD Water Treatment Facility	Critical Infrastructure	1
3	BC Hydro Substation	Critical Infrastructure	2
<b>VULNERABLE SITES</b>			
1	Compass Childcare	Childcare	1
1	Westshore Community Daycare	Childcare	2
1	Kids Klub Lakewood Elementary	Childcare	3
1	Westshore Alliance Church	Church	4
1	Lakewood Elementary	School	5
1	Millstream Elementary	School	6
1	Hidden Valley Mobile Home Park	Mobile Home Park	7
1	The Westin Bear Mountain	Hotel	8
1	Four Points by Sheraton	Hotel	9
2	Belmont Early Learning Centre	Childcare	10
2	Happy Campers OSC Willway	Childcare	11
2	Willway Elementary	School	12
2	Belmont Secondary School	School	13
2	Mobile Home Park (Sooke Lake Rd.)	Mobile Home Park	14
2	Goldstream Mobile Home Park	Mobile Home Park	15
3	Almost Home Childcare Preschool	Childcare	16
3	Willowbrae Childcare Academy Langford	Childcare	17
3	Happy Campers OSC Dunford	Childcare	18
3	Happy Campers OSC Forge	Childcare	19
3	Happy Campers OSC Orono	Childcare	20
3	Happy Campers Bray	Childcare	21
3	HI Kids Early Learning Education and Child Care Cent	Childcare	22
3	Kids Klub Western #1	Childcare	23
3	Kids & Company Langford	Childcare	24
3	CEFA Early Learning Victoria Langford	Childcare	25
3	Our Lady of the Rosary Preschool and Child Care	Childcare	26
3	The Forge Church	Church	27
3	Our Lady of the Rosary	Church	28
3	Grace Baptist Church	Church	29
3	Gordon United Church	Church	30
3	Ruth King Elementary School	School	31
3	Spencer Mills Middle School	School	32
3	Lighthouse Christian Academy	School	33
3	Alexander Mackie Lodge	Seniors	34
3	Cherish at Central Park	Seniors	35
3	Jeskin Aerie	Seniors	36
3	Prince Edward Lodge	Seniors	37
3	Tri Way Mobile Home Park	Mobile Home Park	38
3	Wood Park Mobile Home Park	Mobile Home Park	39
4	Kingdom Hall of Jehovah's Witnesses	Church	40
4	Savory Elementary	School	41
4	Crystal View Elementary	School	42
4	The Priory	Seniors	43
4	Fairway Woods	Seniors	44
4	Arbutus Ridge Estates Mobile Home Park	Mobile Home Park	45
4	Creekside Park	Mobile Home Park	46
4	Solo Suites	Hotel	47
5	Alphabet Zoo Early Learning Centre	Childcare	48
5	Summer Breeze Early Care and Learning Centre	Childcare	49
5	The Learning Journey Child Care Centre	Childcare	50
5	Almsthorne Child Care	Childcare	51
5	Happy Valley Elementary	School	52
<b>ALTERNATE HIGHWAY ACCESS POINTS</b>			
GATE No.	ACCESS DETAILS		
1	Humpback Road - Locked gate (Fire Dept / City Access Only)		
2	Sooke Lake Road - Alternate highway access - concrete barriers would need to be removed (Southbound access only)		
3	McCallum Road - Alternate highway access. (Northbound access only).		
4	Spencer Road - Alternate highway access - Locked gate. (Southbound access only)		
5	Bellamy Road - Alternate Highway access - Locked gate. (Northbound access only)		
6	Lone Oak Road - Alternate Highway access - Locked gate. Southbound only - Locked gate.		

